

East Area Planning Committee Presentation

www.oxford.gov.uk



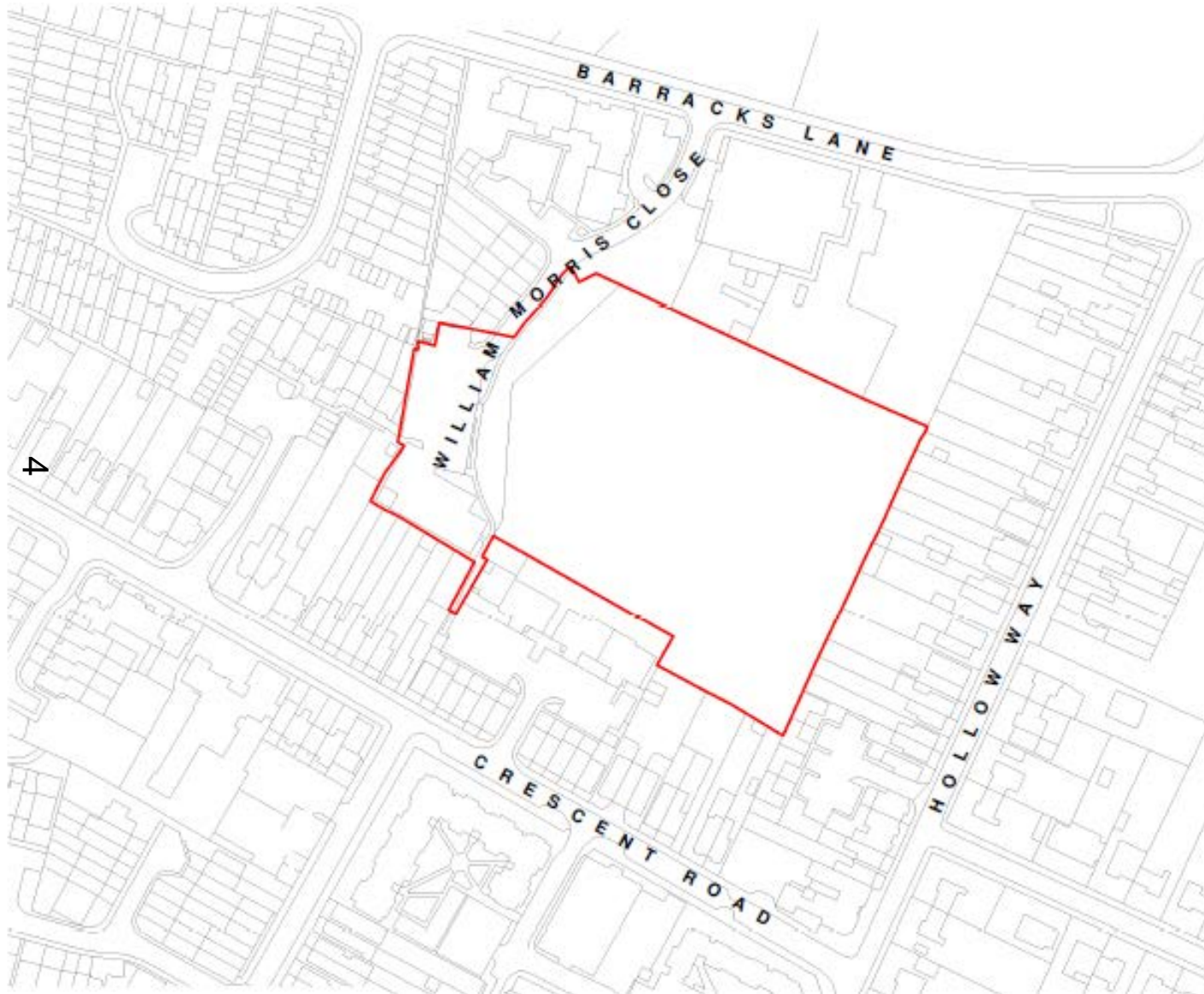
**Application reference number:
18/03330/OUT**

3

**Application site address: Sports Field,
William Morris Close**



Location Plan



[.gov.uk](http://www.oxford.gov.uk)



**OXFORD
CITY
COUNCIL**



Aerial Photo



www.oxford.gov.uk



Site Photos

gov.uk



Site Photos

oxford.gov.uk



7



Site Photos



8

oxford.gov.uk



Site Photos

gov.uk



6



Site Photos

.gov.uk



Site Photos

-gov.uk



**OXFORD
CITY
COUNCIL**

11



Site Photos



12

d.gov.uk



Proposed Site Plan (Revised)



13

oxford.gov.uk



Tenure Layout (Ground Floor)

14

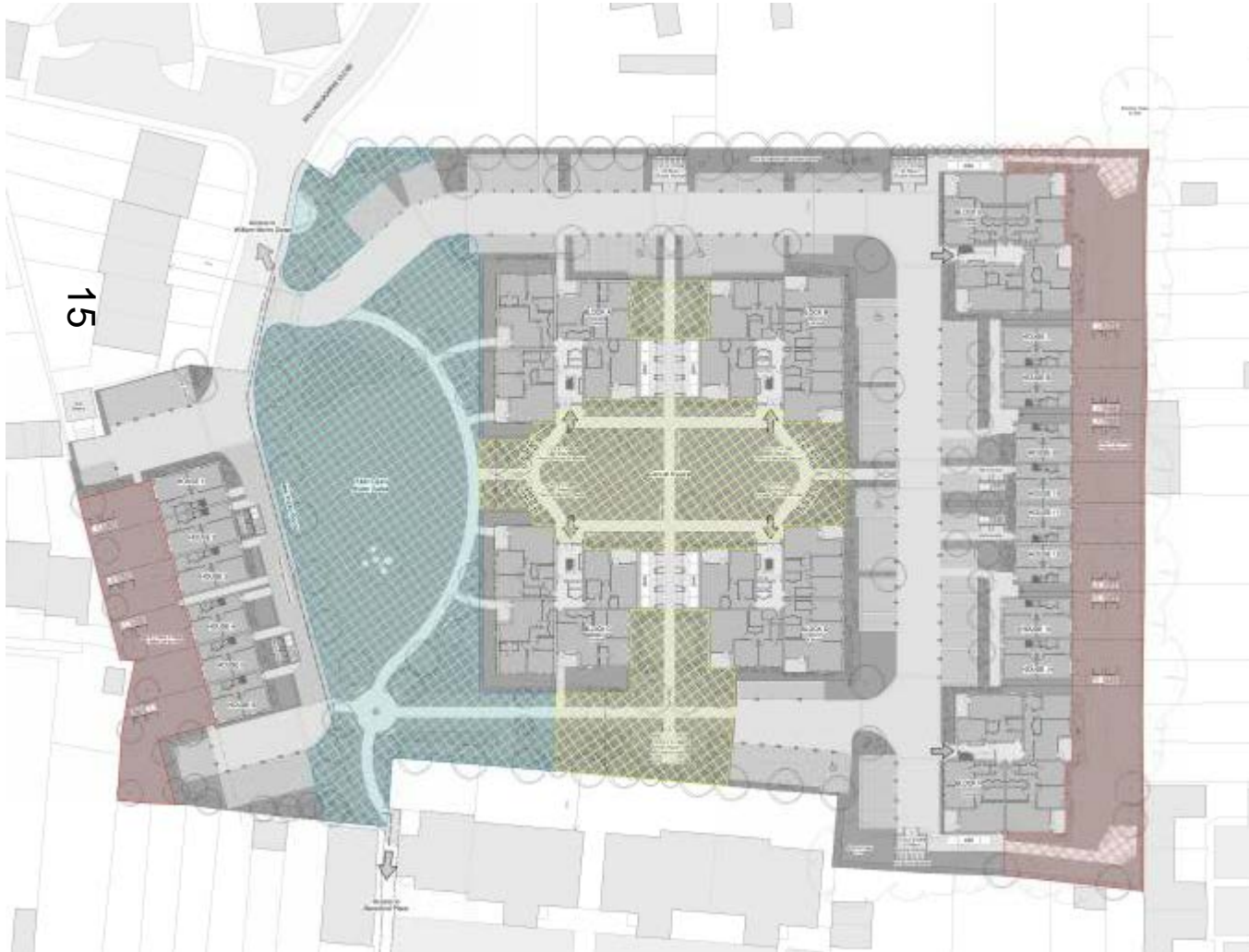


www.oxford.gov.uk



Public/Private Space Layout

www.oxford.gov.uk



- PRIVATE AMENITY SPACE
(accessible only by the adjacent dwellings - Private Gardens)
- PRIVATE AMENITY SPACE
(accessible only by the residents of the development)
- PUBLIC OPEN SPACE



Proposed Elevations – Houses 1-6



1 Houses 1-6 - North East Elevation (Front)
1 : 100



4



3 Houses 1-6 - North Elevation (House 1 Side)
1 : 100



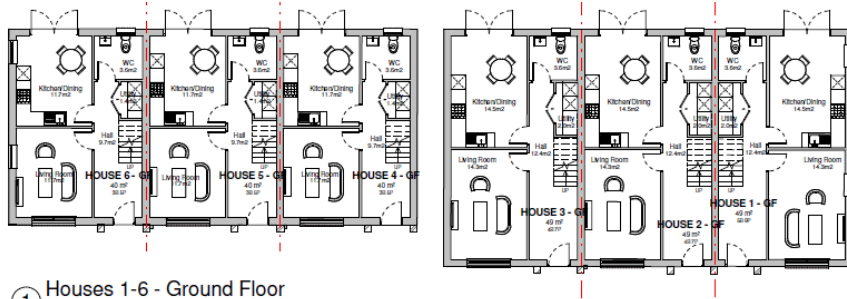
2 Houses 1-6 - South West Elevation (Rear)
1 : 100

D
L

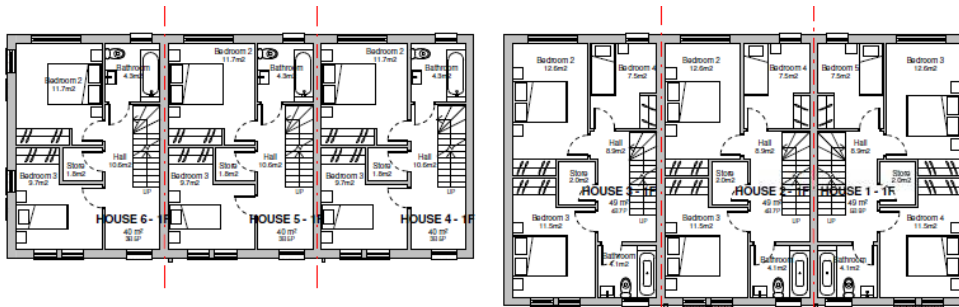
2



Proposed Floor Plans – Houses 1-6



① Houses 1-6 - Ground Floor
1:100



② Houses 1-6 - First Floor
1:100



③ Houses 1-6 - Second Floor
1:100



Proposed Elevations – Houses 7-14

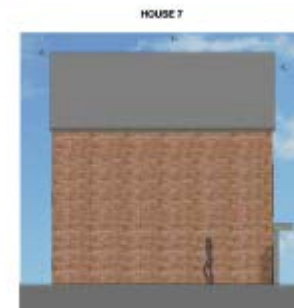


① Houses 7-14 - West Elevation (Front)
1:100

18



② Houses 7-14 - East Elevation (Rear)
1:100

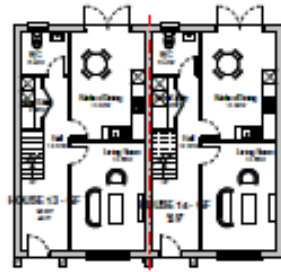
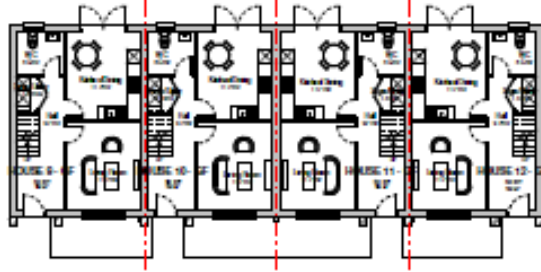


③ Houses 7-14 - North Elevation (House 7 Side)
1:100



④ Houses 7-14 - South Elevation (House 14 Side)
1:100

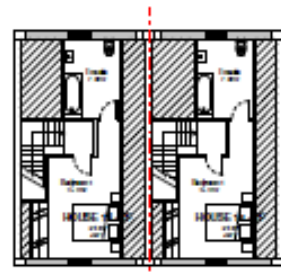
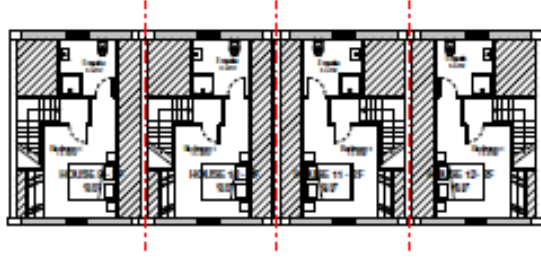




① Houses 7-14 - Ground Floor
1:100



② Houses 7-14 - First Floor
1:100



③ Houses 7-14 - Second Floor
1:100



Originally Proposed Elevations – Central Blocks

20



① Block A & B - North Elevation
1 : 100



② Block A & C - East Elevation
1 : 100



Proposed Elevations – Apartments (Central Block) – Revised Plans

www.oxford.gov.uk



21



① Block A & B - North Elevation
1 : 100



② Block A & C - East Elevation
1 : 100



Proposed Elevations Apartments (Central Block)



① Block A & C - West Elevation (View from Public Open Space)
1: 100



② Block A & B - South Elevation (View from Central Square)
1: 100



Proposed Elevations Apartments (Central Block)



① Block B & D - East Elevation
1:100



② Block B & D - West Elevation
1:100



Proposed Elevations Apartments (Central Block)



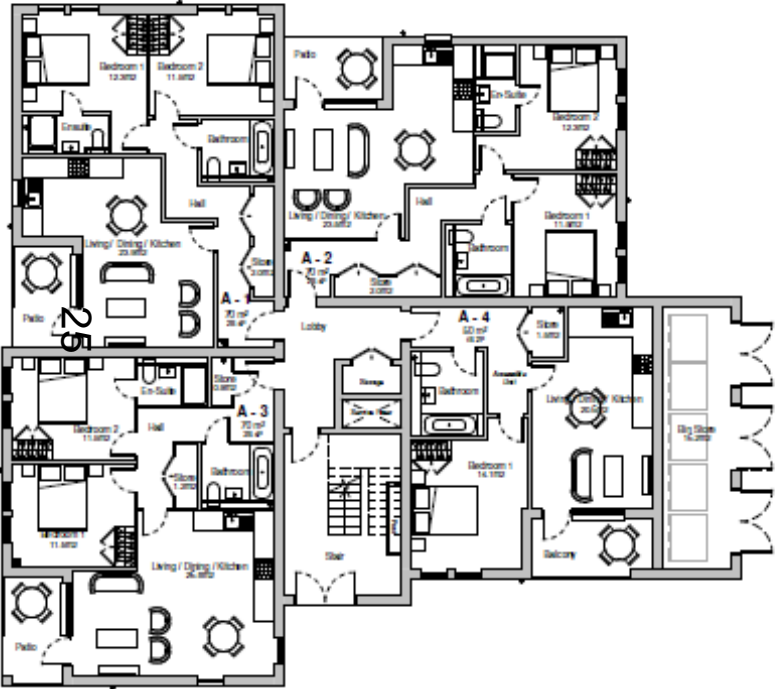
① Block C & D - North Elevation (View from Central Square)
1 : 100



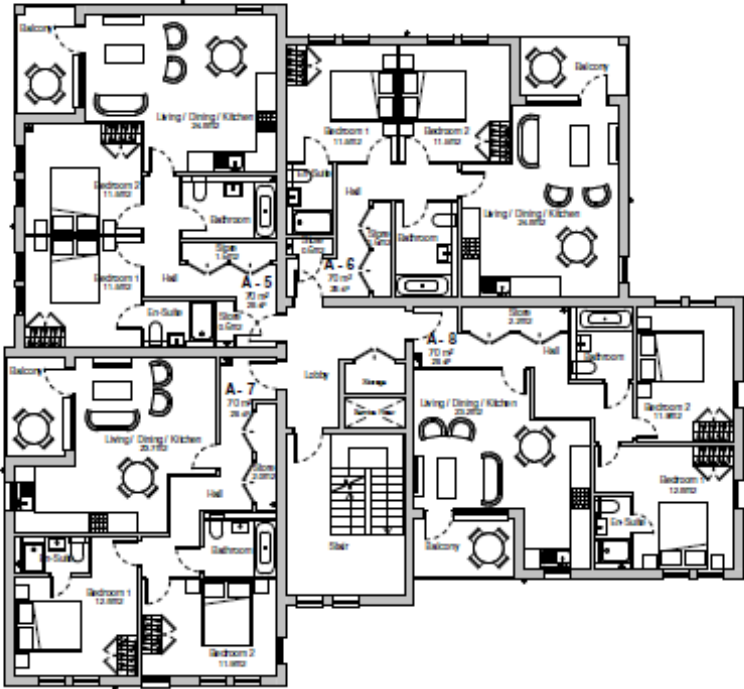
② Block C & D - South Elevation
1 : 100



Floor Plans – Block A



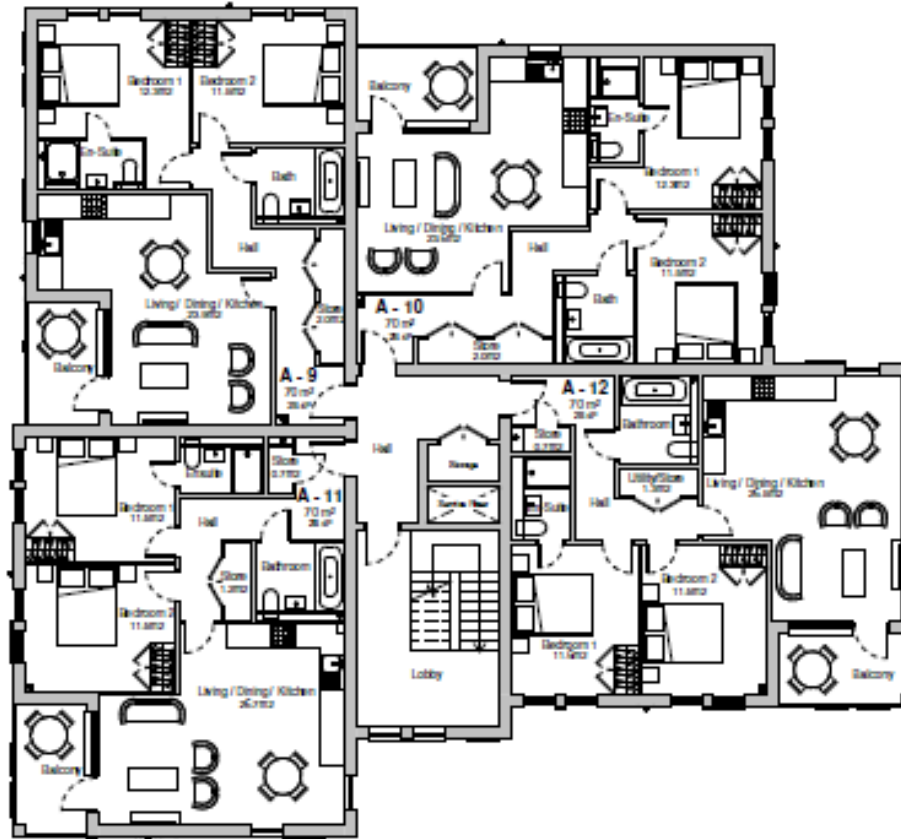
1 Block A - Ground Floor
1:100



2 Block A - First Floor
1:100



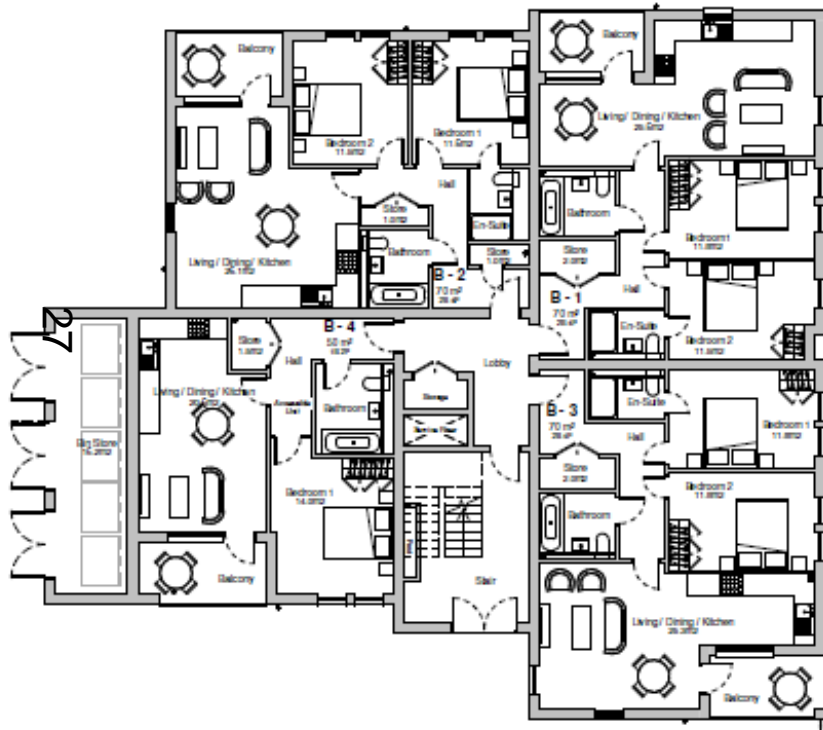
Floor Plans Block A



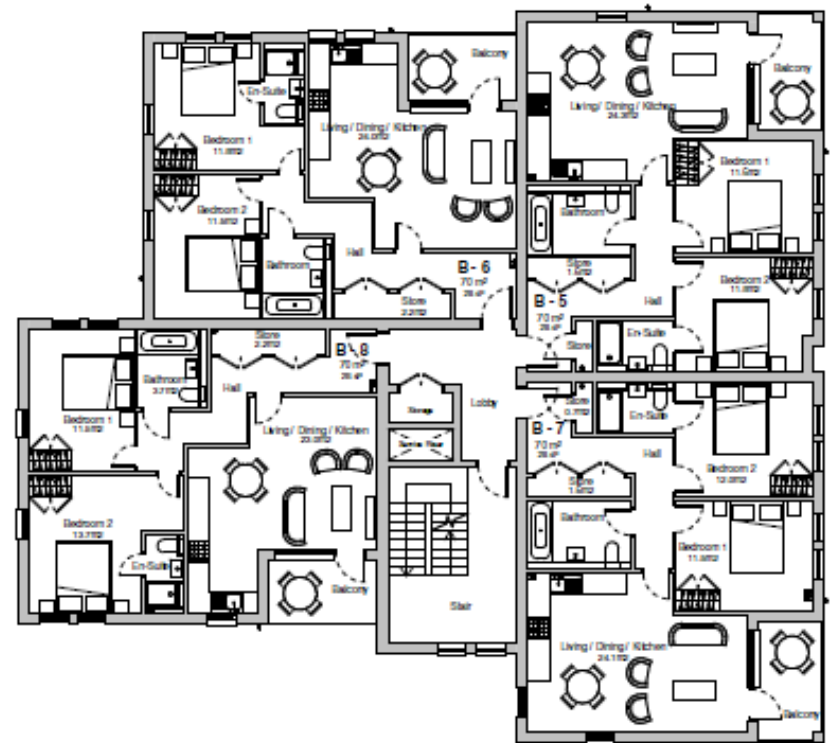
3 Block A - Second Floor
1 : 100



Floor Plans – Block B



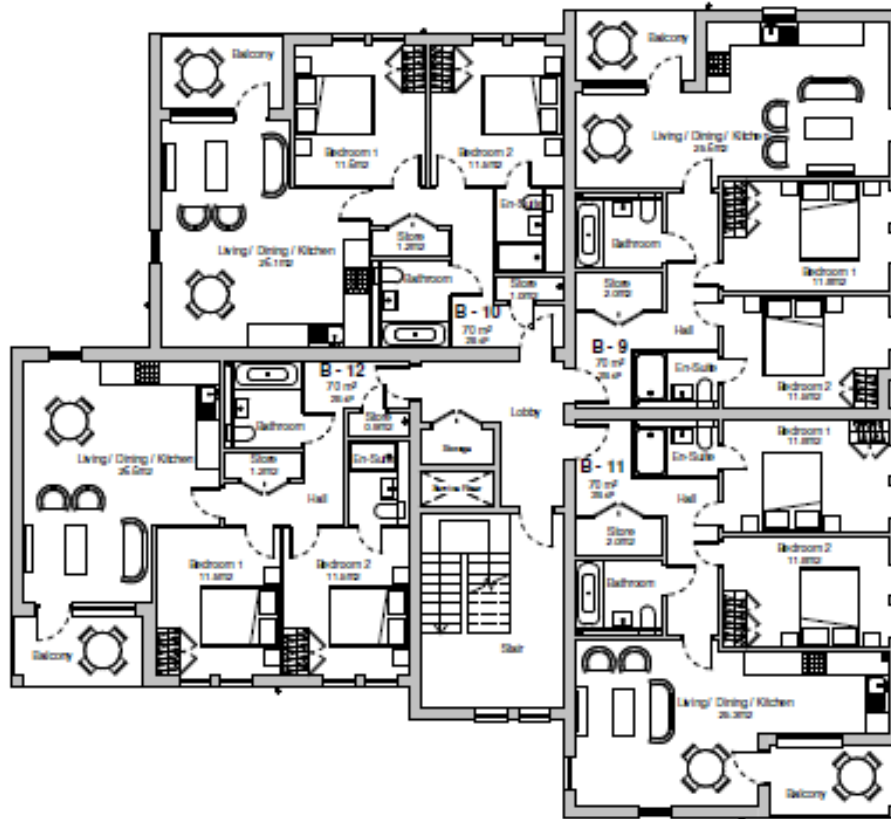
1 Block B - Ground Floor
1 : 100



2 Block B - First Floor
1 : 100



Floor Plans – Block B



3 Block B - Second Floor
1 : 100



Elevations – Block E

29



① Block E - West Elevation (Front)
1:100



③ Block E - North Elevation (Side)
1:100

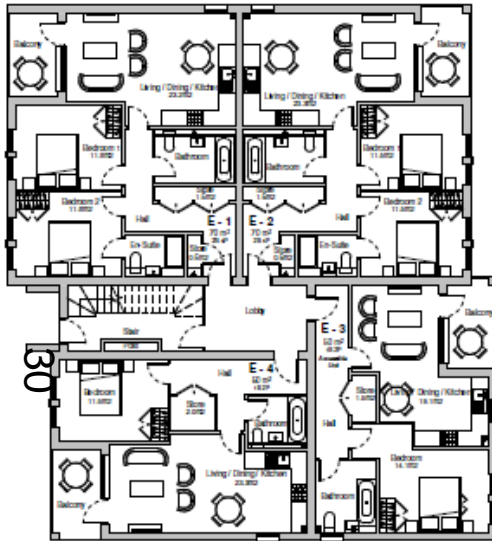


② Block E - East Elevation (Rear)
1:100

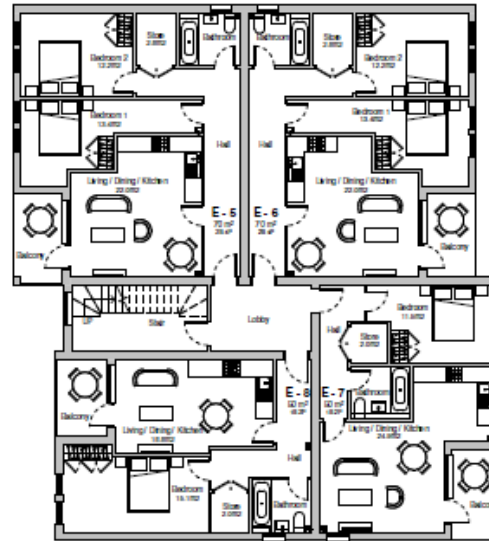


④ Block E - South Elevation (Side)
1:100

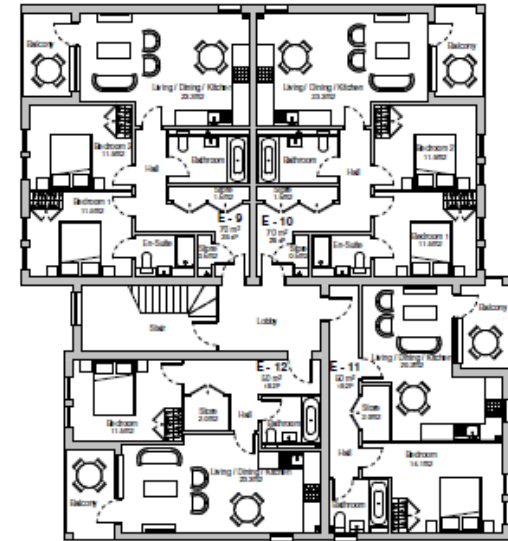




1 Block E - Ground Floor
1 : 100



2 Block E - First Floor
1 : 100



3 Block E - Second Floor
1 : 100



Elevations – Block F

31



① Block F - West Elevation (Front)
1 : 100



③ Block F - South Elevation (Side)
1 : 100

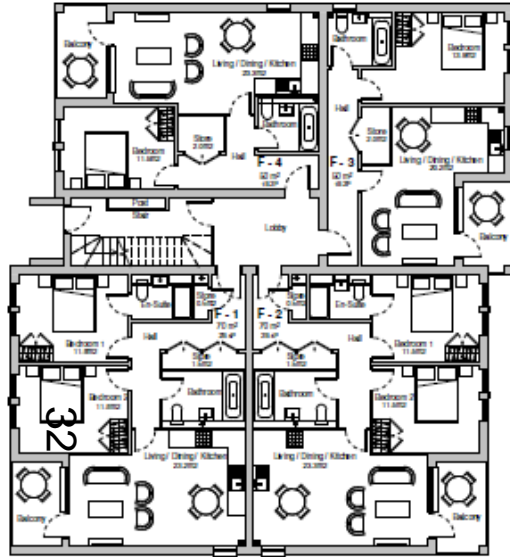


② Block F - East Elevation (Rear)
1 : 100

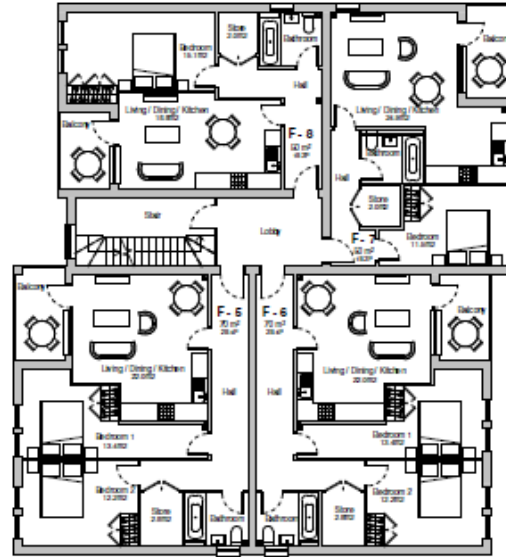


④ Block F - North Elevation (Side)
1 : 100

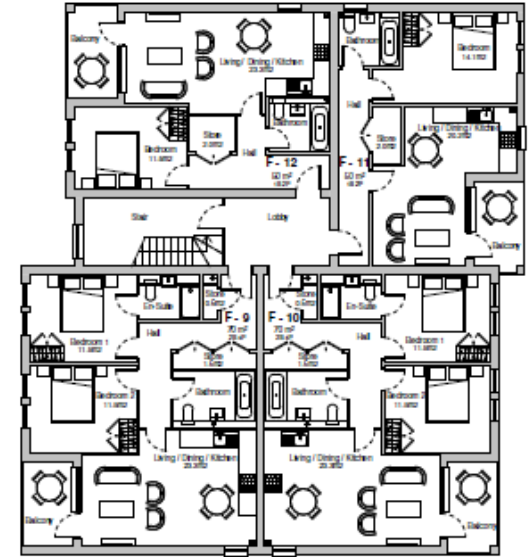




1 Block F - Ground Floor
1 : 100



2 Block F - First Floor
1 : 100



3 Block F - Second Floor
1 : 100



Sections



② Block A & B - Long Elevation
1 : 200

33



③ Block A & C - Long Elevation
1 : 200

D
L



Visuals



34



Figure 2 - Looking east over central square



Figure 3 - Looking south east towards Block E and Housec 8-16



Figure 4 - Looking east towards Blocks A, B and E

Visuals



Figure 6 - Looking west towards central square



Figure 8 - Looking east towards Houses 11-16



Figure 7 - Looking north west towards Blocks B and D



Figure 8 - Looking north between Blocks C and D



Figure 9 - Looking south between Blocks A and B



This page is intentionally left blank